



Maximize Employee Productivity, Improve Comfort, and Reduce Injuries

National Ergonomics Month is the time to review your operation

October is National Ergonomics Month, which aims to highlight the importance of designing workplaces that fit people better and promote the health and well being of workers. At JIT Toyota-Lift, we offer material handling and warehouse equipment that makes life easier for your team, while also increasing throughput and streamlining your facility.

[Schedule a Demo](#)[Find Your Machine](#)

Move More Product and Eliminate Unsafe Conditions

Toyota reach trucks, order pickers, and pneumatic forklifts in stock

Engineered with ergonomics in mind, Toyota material handling equipment is simple to operate, highly stable, and can maneuver in most facilities.

Reach trucks – Give your employees the ability to transport loads weighing from 2,500 lb to 4,500 lb in narrow aisles where larger forklifts can't fit. Plus, you can tailor them to your requirements and team by setting travel and lift speeds, lift heights, adding attachments, and more.

[More on Reach Trucks](#)

Order pickers – Providing a more effective alternative to ladders, order pickers make it easy to access the second or third level of racking and gather individual products for fulfillment. Plus, they include a full body harness and energy absorbing tether, so operators are protected and have full mobility.

[More on Order Pickers](#)

Core IC Pneumatic forklifts – Equipped with advanced safety features, Toyota pneumatic forklifts help prevent accidents through the Toyota System of Active Stability (SAS), which detects unsafe conditions and activates stabilizing measures. Plus, avoid spilling loads because of Active Mast Control that automatically limits forward tilt when a load is unstable.

[More on Core IC Pneumatic Forklifts](#)[Schedule a Demo](#)

Minimize Downtime and Employee Accidents

Using Advance lift tables and tilt tables

When employees have to consistently bend, kneel down, overreach, or work at awkward angles, you increase the chances of workplace injuries and create bottlenecks in your process. Advance lift and tilt tables fix these situations by raising, lowering, or angling heavy materials and equipment, placing them in the optimal position for specific employees and tasks.

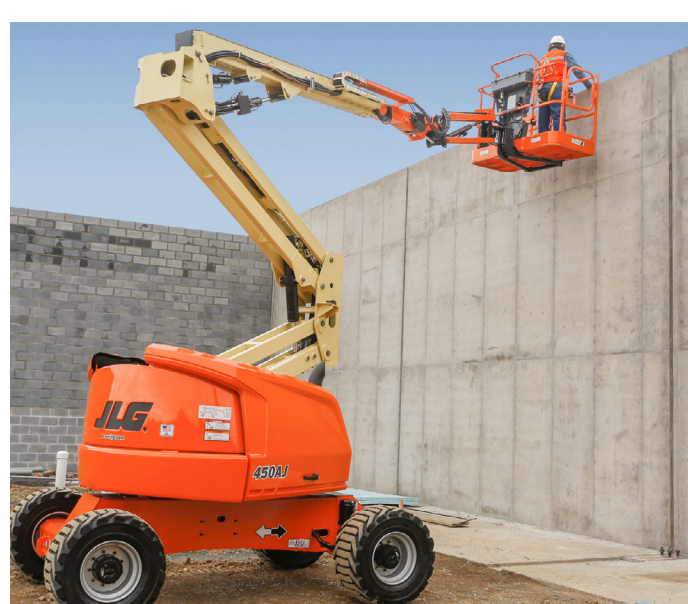
If you want to understand how Advance lift and tilt tables can improve your operation, contact our team today!

[Schedule a Consultation](#)

Rentals for ANY Project

Both short and long term options available

We deliver forklifts, telehandlers, lifts, pallet jacks, sweepers, attachments, and more. Our rentals are late models, low hour, and well maintained.

[Choose Your Rental](#)[Reserve a Machine](#)

Boost Your Uptime

We make it easy to quickly order parts online

Use our online search tool to order steer axles, lift cylinders, engine heads, hydraulic pumps, steering pumps, wheels, doors, hoods, and much more! Or, call our team, and we'll help you locate the right components.

Call 716-569-2410 for parts assistance, or shop at the online store by clicking below.

[Find Your Parts](#)

MORE FROM JIT TOYOTA-LIFT

[USED EQUIPMENT](#)[SERVICES](#)[See Reviews from Our Customers](#)