



Maximize Your Productivity. Minimize Your Costs.

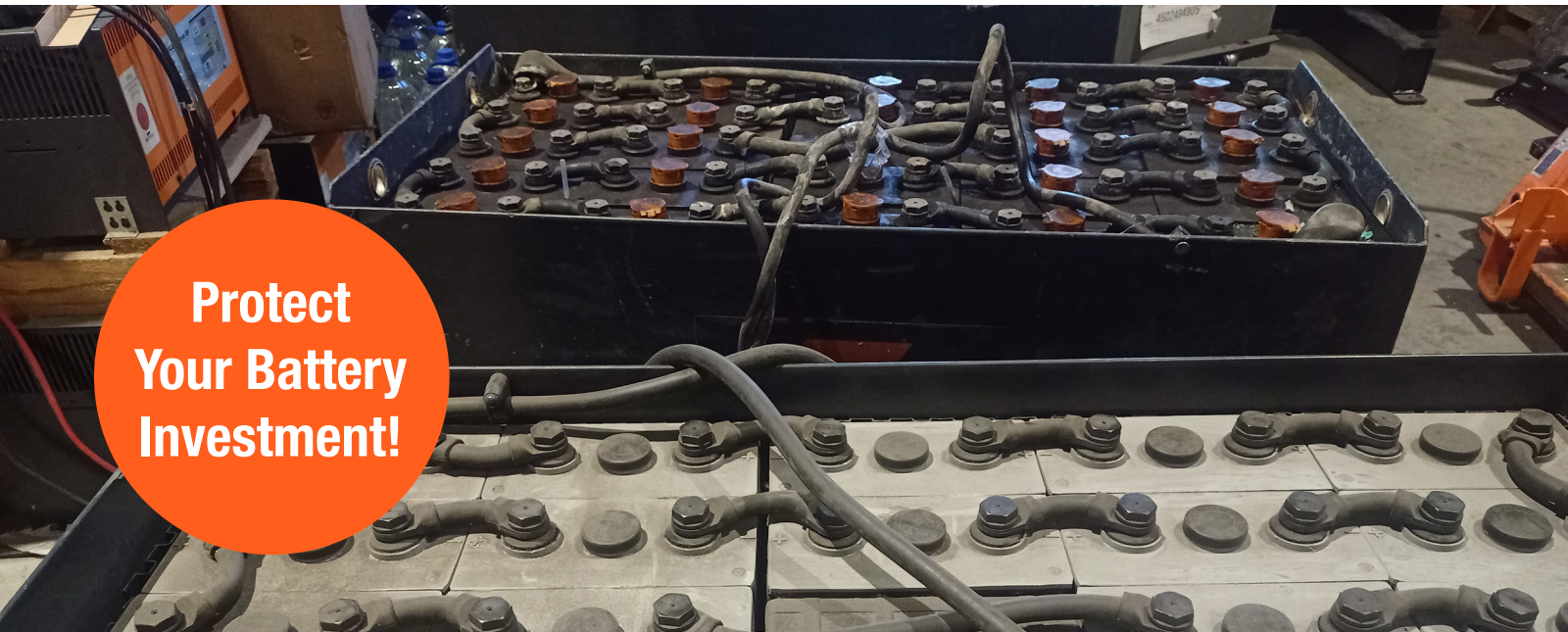
With our warehouse lean management consulting services

If you want to eliminate wasted time and effort while significantly improving your warehouse's effectiveness, then you need to implement lean management. Our team will evaluate your current facility and processes, and make suggestions like adding new equipment and automation, changing your layout and workflow, and starting new employee training.

The result? Your operation is more efficient, you require less labor, and your employees are more productive.

[More on Lean Management](#)

[Schedule a Consultation](#)



**Protect
Your Battery
Investment!**

Our New Forklift Battery Division Is Open for Business!

A one stop shop for maintenance, washing, testing, and more

We're making it easier than ever to keep your batteries operating at their best. Our forklift battery division takes care of everything:

- Cleaning and washing
- Discharge testing
- Watering
- Connector and contactor replacement
- Cell replacement
- Cable repair

We offer fast turnaround times for service, and we have a mobile wash bay, so our team comes to you for cleaning, watering, and more!

[More on Battery Services](#)

[Schedule Battery Service](#)



GNB Batteries and Chargers in Stock

Find the best solution for your operation

Our team will look at your forklifts, shift schedule, current energy usage, and more to tell you which type and size battery and charger are the best fit for your equipment. We offer a wide variety of options from GNB that deliver efficient power, long run times, and fast charging.

Contact Bill Larkin for All Your Forklift Battery Needs

Phone: 716-569-2410

Email: blarkin@jitny.com

[More on GNB](#)

[Order Your Battery](#)

Handle ANY Job

By renting from our fleet

Never turn down work because you don't have the right equipment! We deliver forklifts, aerial lifts, pallet jacks, stock pickers, floor scrubbers, and more, right to your facility or worksite. Our machines are late models, low hour, and well maintained—so your crew is well equipped for every project.



[Find Your Rental](#)

[Reserve a Machine](#)

MORE FROM JIT TOYOTA-LIFT

[USED EQUIPMENT](#)

[BEST PRACTICES](#)

[See Reviews from Our Customers](#)